

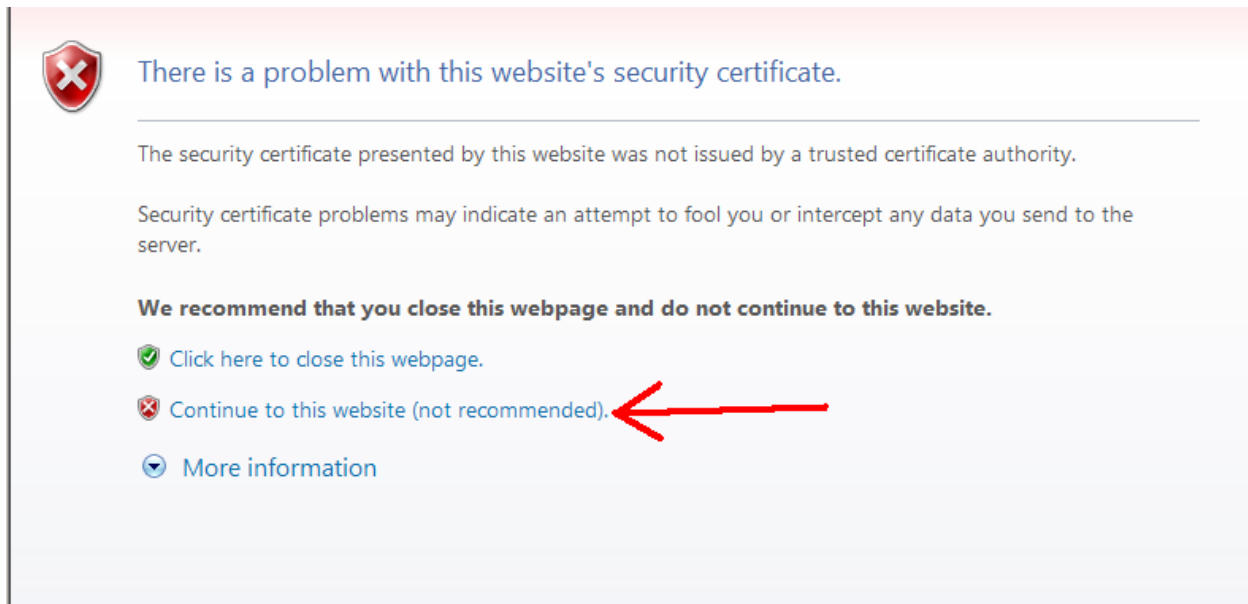
Interactive One VPN usage instructions

The VPN connection we use is now browser based. To utilize it, open your browser and go to

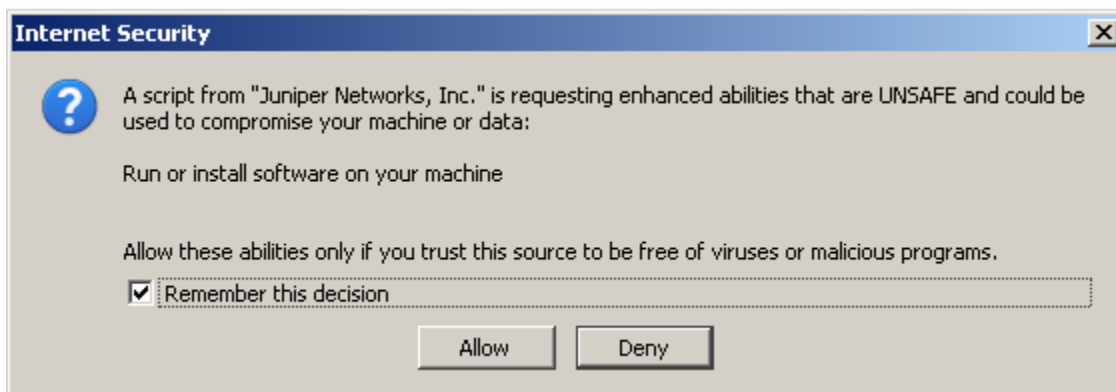
<https://secure.interactiveone.com>

If it gives you a security alert, you must continue to the site. In IE, this is done as pictured below.

Click "Continue to this website".



It may prompt you to allow scripts. This is normal. Please click "remember this decision" and "allow".



You should have a login like the one pictured below.

INTERACTIVEone

Welcome to the
Interactive One VPN

Username



Password

Please sign in to begin your secure VPN session.



Log in with your credentials issued for the new domain. See the helpdesk if you need your password reset. Once logged in, the resources available to you will appear as shown.

Welcome to the Interactive One VPN, interactiveone\rspear.



Web Bookmarks

-  [Intranet](#)
Interactive One Intranet Site
-  [Email](#)
Exchange 2010 email

Files

-  [General Shared Folder \(S: Drive\)](#)
-  [Personal Share \(P: drive\)](#)

Client Application Sessions

-  Network Connect
-  Java Secure Application Manager